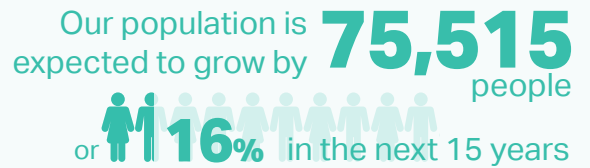
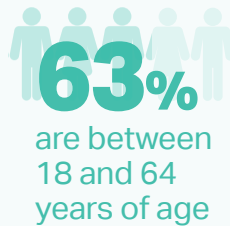
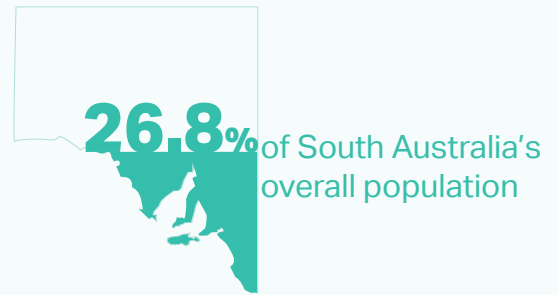
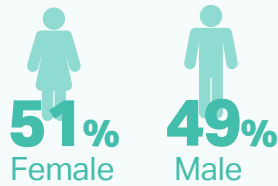


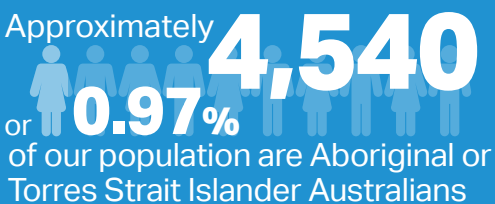
CALHN Consumer Snapshot

Our community

We are the most densely populated and diverse of all the health networks in South Australia



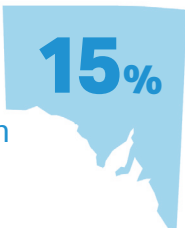
Aboriginal and Torres Strait Islander population



Based on February 2020 data, **4%** of CALHN admissions identified as Aboriginal & Torres Strait Islander



Migrants from non-English speaking backgrounds make up nearly of SA's population



In CALHN, **30%** of residents were born outside of Australia, the greatest cultural diversity being in CALHN west



Over **150** countries of birth identified among CALHN admissions;
60% Australia
7% UK



TOP 3 languages

RAH

Mandarin, Vietnamese, Greek

TQEH

Vietnamese, Greek, Italian

CALHN

is the most advantaged LHN with

57%  of residents

living in high socioeconomic areas
(compared to **40%** across SA)

The western suburbs have higher
levels of disadvantage



Consumer health and lifestyle

10%  have diabetes

10%  have cardiovascular disease

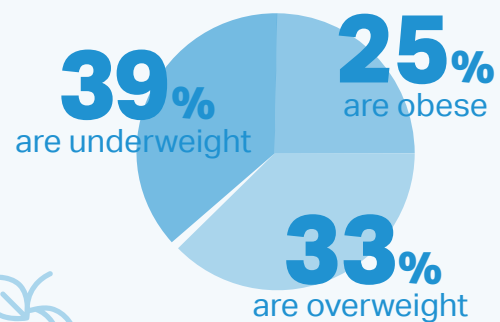
11%  have psychological distress

15%  have asthma

18%  have arthritis

20%  have mental health problems

25%  have high blood pressure



45%  consume their recommended daily fruit intake

9%  consume their recommended daily vegetable intake.

51%  exercise regularly

10%  consume alcohol daily

13%  smoke

82%  rate their health as good or better

49%  consider they have good wellbeing

People living with a disability

 **5.9%**

of people living in the central region of Adelaide report needing help in their day to day lives due to **DISABILITY**

0.84% of the total CALHN workforce have declared a disability

Average number of those with a disability in CALHN general beds



RAH

19

Patients



TQEH

9

Patients



HRC

34

Patients



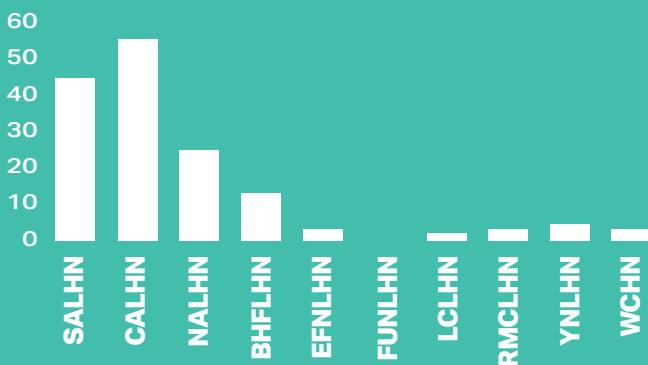
TOTAL

62

Patients

National Disability Insurance Scheme (NDIS) comparison data

NDIS Inpatients Reported Across South Australia as of June 2021 by LHN



Over **150** patients

are discharged from CALHN each month, who have been on a mental health treatment order

200 

patients a month are cared for in CALHN (admitted and in the Emergency Department) who have no fixed address

